



Compact Point-of-Use Electric Heater

1 gallon, 1000 watts,
120 volt, single phase

The Hubbell Expeditor Series is designed to save you time and money. All Expeditor products are easy to install and service.

- Stainless Steel tank and a low watt density heating element provide long service life
- Reliable, trouble-free design
- Space saving design requires no floor space and is acceptable for use in ADA compliant installations
- Low amperage design reduces peak power consumption and installation costs
- 304 Stainless Steel Exterior
- Point of use installation installs directly to cold water piping
- Thermostat provides accurate temperature control
- No flow restrictor or special aerator required
- Easily installed using 120V 1 phase power

Applications

Restaurants, schools, hospitals, casinos, country clubs, banquet centers, correctional facilities, food preparation facilities, wash room/lavatory sinks, hand sinks, remote locations, food carts, OEM applications, and much more.



EXPEDITOR SERIES

J1SSA

The Hubbell Expeditor J1SSA is a compact point-of-use water heater that does not take up any floor space and eliminates the need for long pipe runs from a central heater. It is simple to install, operates with all types of fixtures, does not require a flow restricting device and will not alter the performance or appearance of a fixture. The Expeditor J1SSA is ideal for many foodservice applications where point of use hot water is required. Its rugged construction ensures reliable and trouble free operation.

Reliability is not just a word for us – it's everything we do.

Hubbell Expeditor booster heaters are the right choice for your foodservice needs. For over a century, we have delivered solutions that stand up to the rigors of even the busiest kitchens. Contact us today and experience the Hubbell difference.

NOTE: Manufactured in an ISO 9001:2015 facility.
BABA & BAA compliance is available upon request.

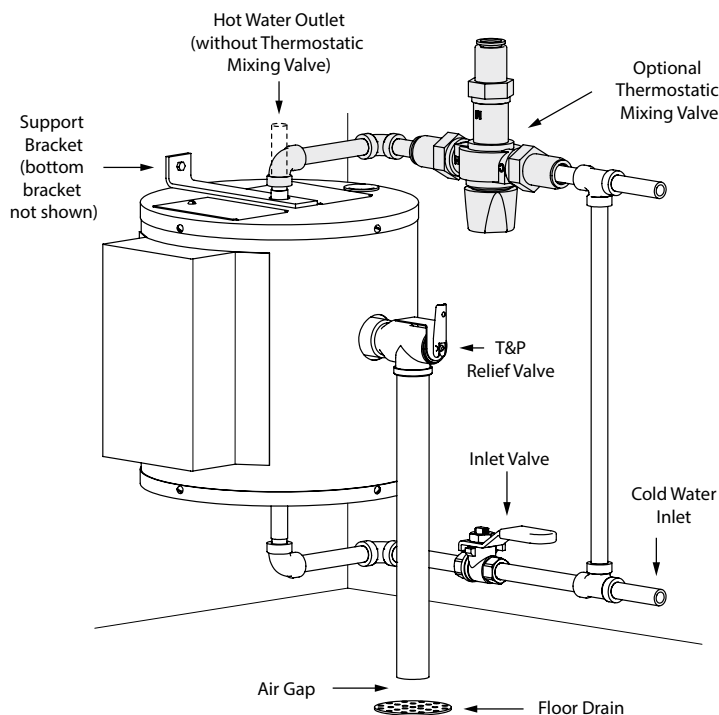


Heater Specifications

	Watts	Amps	Volt	Phase	Recovery Rate No Thermostatic Mixing Valve	Recovery Rate With Thermostatic Mixing Valve
J1SSA	1000	8.3	120	1	6.3 GPH	11.5 GPH
J0.4SSA	450	3.8	120	1	2.8 GPH	6 GPH

Tank	Stainless Steel
Capacities	1 gallon
Orientation	Vertical
Voltage	120 Volt
Phases	1 Phase
Connection Size:	
Inlet	1/4" Male NPT
Outlet	1/4" Male NPT
Relief Valve	3/4" Female NPT
Thermostat Range	110–170°F, graduated 1–10
Hi-Limit	190°F (fixed)
Design WP	150 psi
Test Pressure	300 psi
Element	Copper Sheathed
Insulation	1" Fiberglass
Warranty	
Parts/Labor	1 year
Tank	5 year Non Pro-Rated
Jacket	304 Stainless Steel
Shipping Weight	15 lbs

Note: Alternate voltages available, consult factory



Available Accessories

10-year Warranty: 10-year non pro-rated tank warranty, specify part number VESSEL WARRANTY

Optional Equipment

Note: Optional equipment must be called out in the written specifications, use the codes below.

Electrical

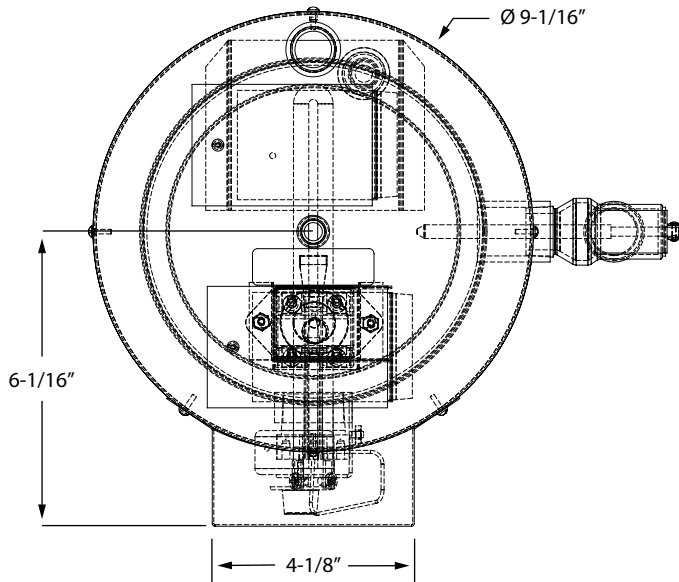
E10 Factory supplied 6 foot long grounded power cord

General

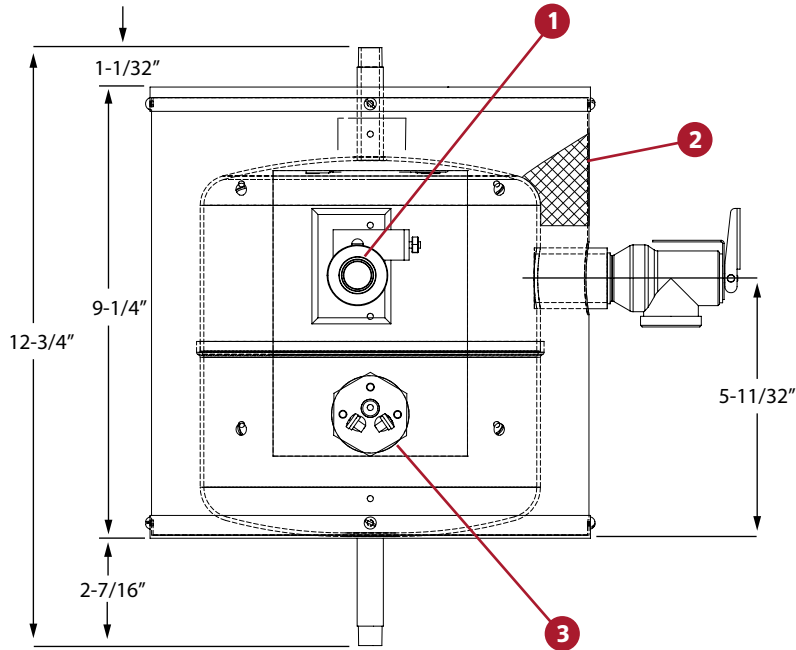
G50 Thermostatic mixing valve is 1/2" and adjustable from 100-130°F

Please note: Optional equipment may impact overall dimensions and weight. Please request submittal drawing from factory.

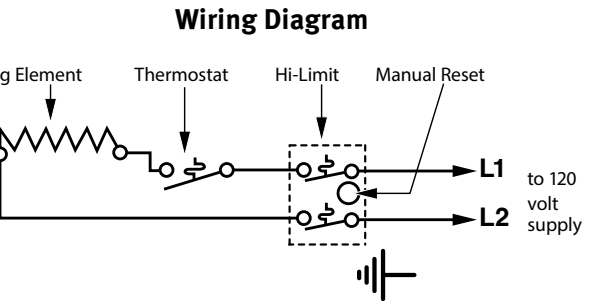
Dimensions



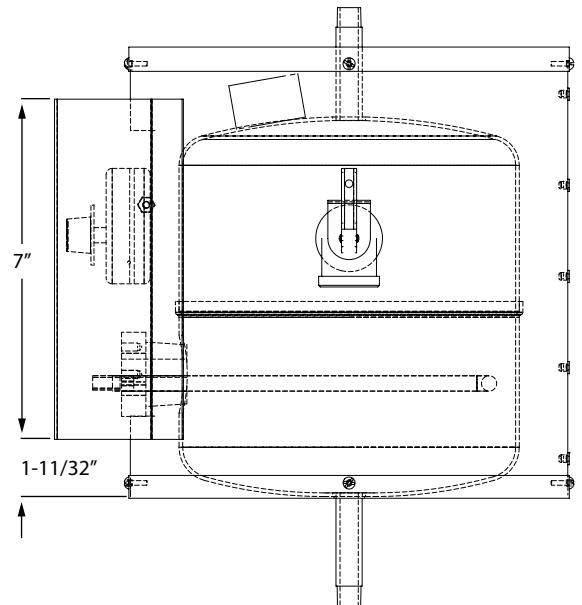
TOP VIEW



FRONT VIEW



PC Number	Description
1	Thermostat 110–170°F
2	Insulation Fiberglass 1" Thick
3	Heating Element — 1000 Watts, 120V



SIDE VIEW

Notes:

1. Unit rated for 150 psi WP
2. Recovery rated 6.3 GPH 45-110°F and will draw 8.3 amps at 120 V, 1 PH
3. Unit supplied with two (2) wall mounting brackets
4. Unit supplied with T&P relief valve set at 150 psi and 210°F



Complete Inventory Ready to Ship

Hubbell Expedito booster heaters are ready to ship same day
when an order is received by the factory by 12:00pm EST.

800.647.3165
info@boosterheaters.com
boosterheaters.com

45 Seymour Street, P.O. Box 288, Stratford, CT 06615



H1058-D-20260126