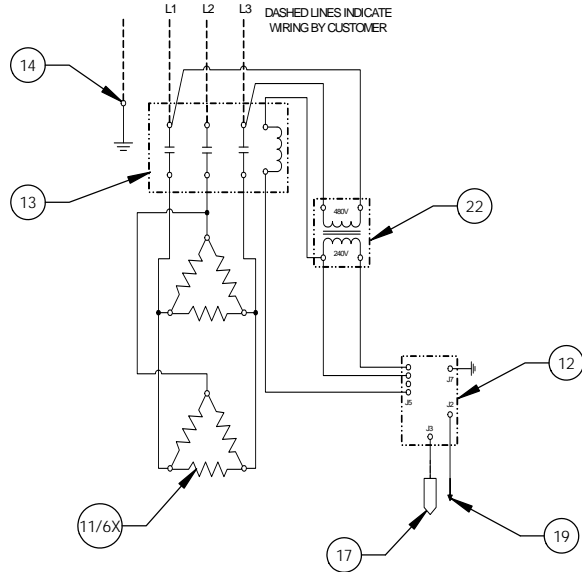
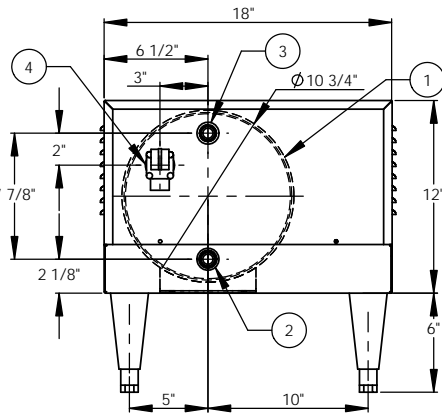


27kW - 480V - 3Ø - 32.5A

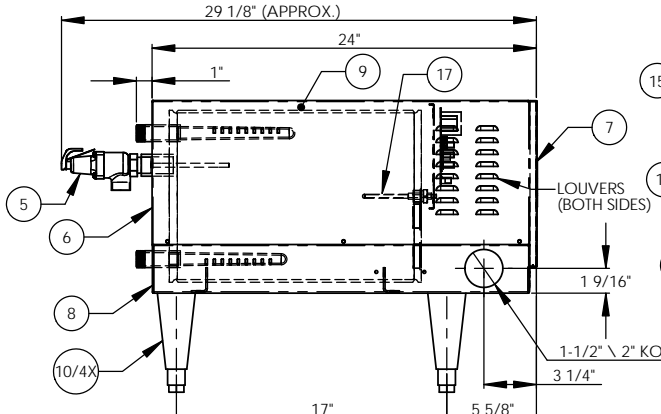


| ITEM NO. | QTY. | PART NO.           | MATERIAL                   | DESCRIPTION                               |
|----------|------|--------------------|----------------------------|-------------------------------------------|
| 1        | 1    | J6-6 TANK          | 304L S/S                   | TANK ASSEMBLY                             |
| 2        | 1    | J6 INLET           | BRASS                      | 3/4" MNPT INLET                           |
| 3        | 1    | J6 OUTLET          | BRASS                      | 3/4" MNPT OUTLET                          |
| 4        | 1    |                    | BRASS                      | 3/4" FNPT FOR RELIEF VALVE                |
| 5        | 1    | 100XL .75 150LB    | BRONZE                     | RELIEF VALVE SET AT 150PSI, 210°F         |
| 6        | 1    | J6-6 JACKET        | 304 S/S                    | TOP COVER ASSEMBLY                        |
| 7        | 1    | J6-6 FRONT COVER   | 304 S/S                    | FRONT COVER ASSEMBLY                      |
| 8        | 1    | J6-6 BASE          | 304 S/S                    | BASE ASSEMBLY                             |
| 9        | 1    |                    | FOAM                       | INSULATION                                |
| 10       | 4    | 61649NOBN5T4       | PLASTIC                    | ADJUSTABLE LEGS                           |
| 11       | 6    | C1315-27           | BRASS PLUG & COPPER SHEATH | HEATING ELEMENT - 1-7/8" HEX 4500W @ 480V |
| 12       | 1    | T1000              | VARIOUS                    | CONTROL MODULE                            |
| 13       | 1    | C25DNF330B         | VARIOUS                    | MAGNETIC CONTACTOR 40A (RESISTIVE) - 240V |
| 14       | 1    | KA4C               | COPPER                     | GROUND LUG                                |
| 15       | 1    | J6-6 CONTROL PLATE | GALVANEEL                  | ELECTRICAL MOUNTING PANEL                 |
| 16       | 1    | TD1000             | VARIOUS                    | DIGITAL DISPLAY MODULE                    |
| 17       | 1    | P65                | VARIOUS                    | PROBE ASSEMBLY                            |
| 18       | 1    | OVERLAY J MODEL    | LEXAN                      | OVERLAY FOR DISPLAY MODULE                |
| 19       | 1    |                    | VARIOUS                    | LEAK DETECTION SENSOR                     |
| 20       | 1    | TID405             | VARIOUS                    | T&P GAUGE 30-240°F/0-200PSI               |
| 21       | 1    | N45BU              | BRONZE                     | PRESS. REDUCING VALVE 25-75PSI            |
| 22       | 1    | B050-3299-3        | VARIOUS                    | TRANSFORMER 50VA 480-208/240V             |

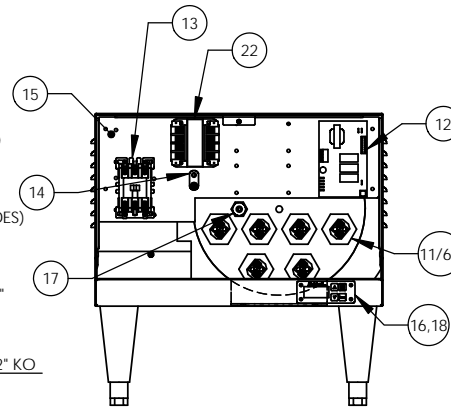
- NOTES:
- TANK IS DESIGNED, FABRICATED, AND STAMPED IAW ASME SECTION VIII CODE, LATEST ADDENDA.
  - TANK IS DESIGNED FOR 150PSI AND PRESSURE TESTED AT 225PSI.
  - PROBE ASSEMBLY (Pc. No. 17) PROVIDES TEMPERATURE CONTROL, HI-LIMIT, AND LOW WATER SENSING.
  - UNIT IS UL, CUL, AND UL EPH LISTED.
  - PIECE NOS. 5, 10, 20, AND 21 ARE SHIPPED LOOSE.
  - CONTROL CIRCUIT WIRE TO BE #18 TEFZEL 750 (200°C), POWER CIRCUIT WIRE TO BE #12 TEFZEL 750 (200°C). ELEMENT JUMPER WIRE TO BE #12 TEFZEL 750 (200°C).
  - PHASE TO PHASE RESISTANCE: 17.1 OHMS DRY: 98 LBS. WET: 146 LBS.



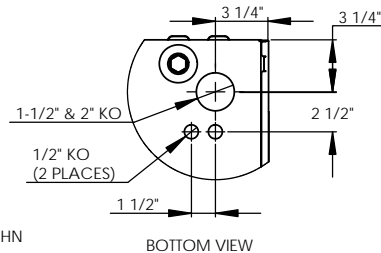
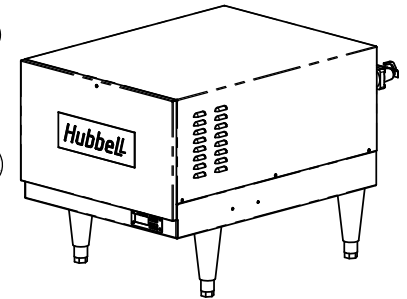
BACK VIEW



LEFT SIDE VIEW



FRONT VIEW (WITH COVER REMOVED)



BOTTOM VIEW

| INSTALLATION REQUIREMENTS |             |
|---------------------------|-------------|
| AMP Draw                  | 32.5        |
| Min. Breaker/Fuse Size    | 45 AMP      |
| Cu Power Feed Wire        | #8 AWG THHN |
| Min. Power Conduit        | 1/2"        |
| Wiring Diagram            | 13 (WT)     |

- ELECTRICAL NOTES:
- POWER FEED WIRE SIZING IS BASED ON 75°C Cu THHN WIRE WITH FEEDER BRANCH PROTECTION AT 125%.
  - REFERENCE INSTALLATION, OPERATION, AND MAINTENANCE MANUAL FOR COMPLETE INSTALLATION INSTRUCTIONS.

| DATE    | NAME   | DESCRIPTION                                                            |
|---------|--------|------------------------------------------------------------------------|
| 2/26/03 | PRD    | Stratford, CT 06615 (203) 378-2659                                     |
| 2/26/03 | WENIII | The Electric Heater Company                                            |
| 7/10/03 | PRD    | Customer:                                                              |
| 8/29/03 | CHD    | Description: J MODEL BOOSTER HEATER J62714 - 6 GALLON 27kW - 480V - 3Ø |

|                              |                                                                                                                                                                       |
|------------------------------|-----------------------------------------------------------------------------------------------------------------------------------------------------------------------|
| PROPRIETARY AND CONFIDENTIAL | DIMENSIONS ARE IN INCHES TOLERANCES: (UNLESS OTHERWISE SPECIFIED) FRACTIONAL: 1/16" ANGULAR: MACH ±1/2° BEND ±1° TWO PLACE DECIMAL: ±0.01 THREE PLACE DECIMAL: ±0.005 |
| SCALE: 1:6                   | FSCM: 19857                                                                                                                                                           |

|      |          |     |
|------|----------|-----|
| SIZE | DWG. NO. | REV |
| C    | J62714   | -   |